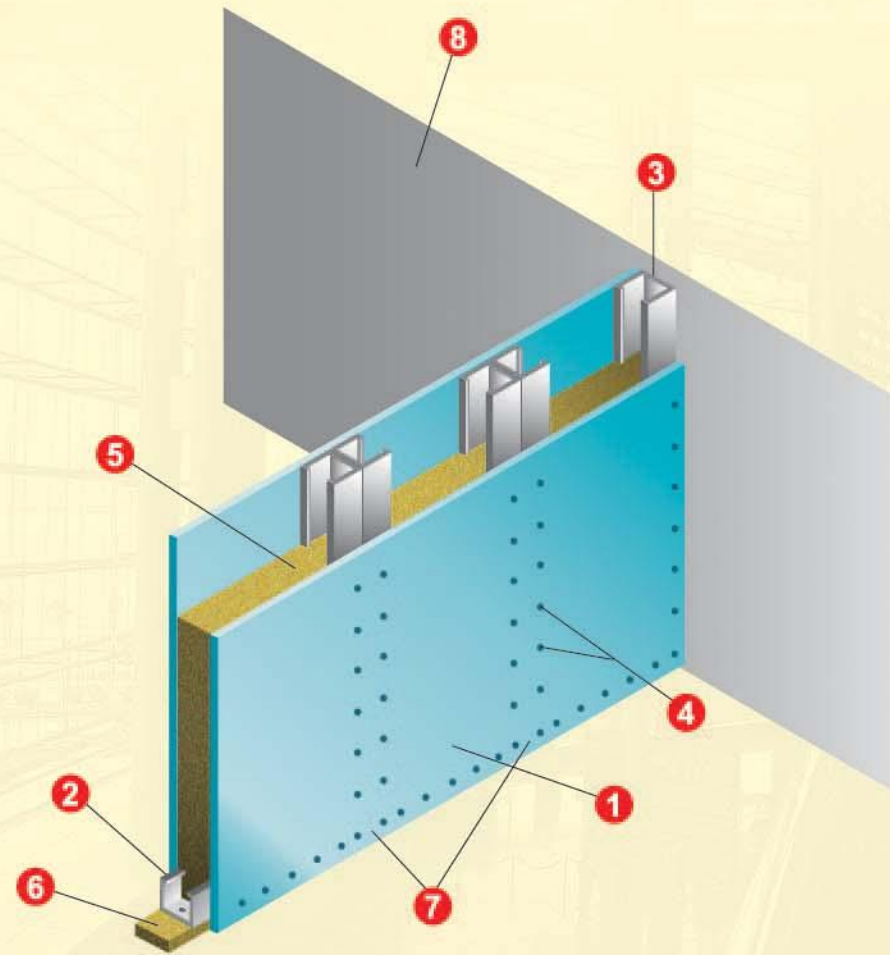
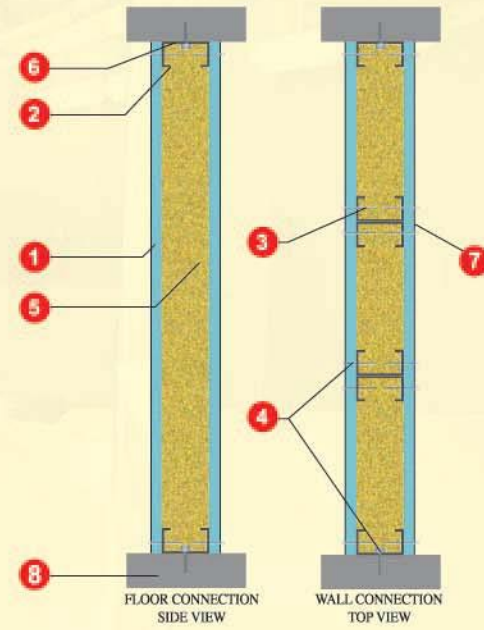


1 HOUR FIRE RESISTANCE NON-LOADBEARING PARTITION DRYWALL

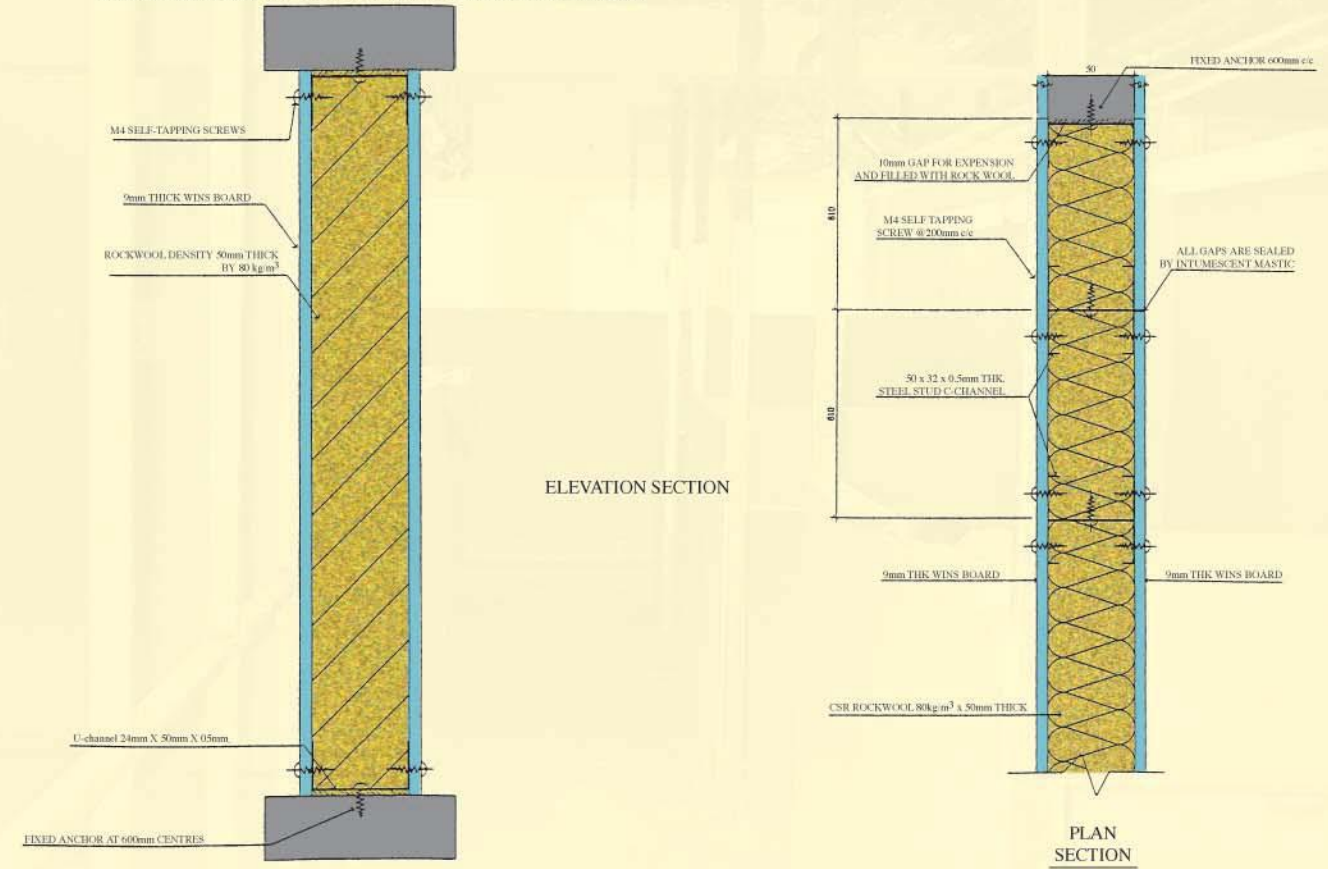
9mm WINS Panel

1 hour fire rating, integrity and insulation in accordance with BS 476 : Part 22 : 1987

- 1 WINS boards, each side 9mm thick
- 2 Ceiling and floor perimeter steel channel 50mm x 24mm x 0.5mm thick
- 3 Steel stud channel 50mm x 32mm x 0.5mm thick at 610mm spacing
- 4 M4 Self-tapping screws at 200mm centres
- 5 Rock Wool density 80kg/m³ by 50mm thick
- 6 10mm GAP for expansion and filled with rock wool.
- 7 All GAP are sealed by Intumescent mastic.
- 8 Concrete Furnace

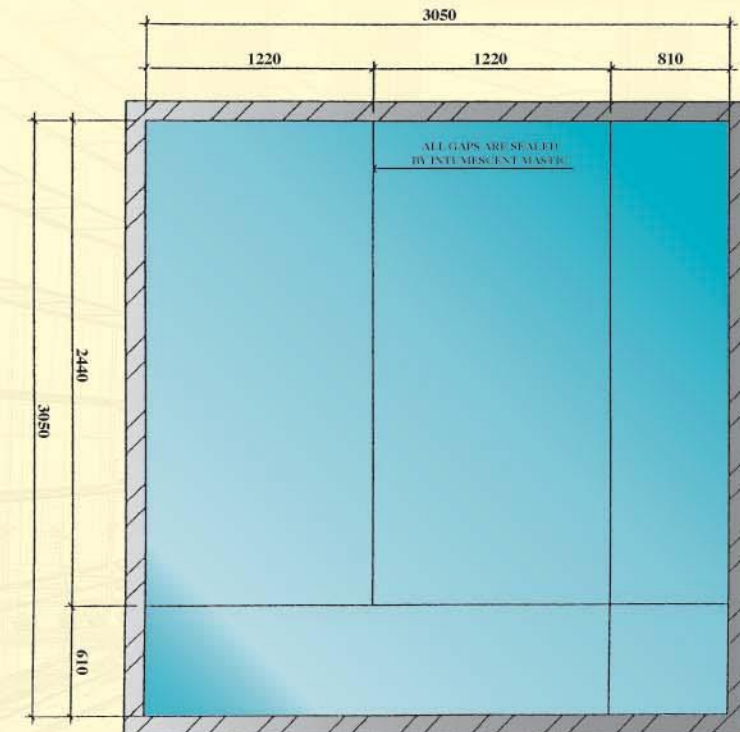


WINS CONSULTANTS LTD. 9mm WINS BOARD (PARTITION DRYWALL)



DENOTES

- 9mm THK WINS-M09 BOARD
- Concrete



WINS CONSULTANTS - 9mm WINS - MO BOARD (PARTITION DRYWALL)

LAYOUT OF WINS MO PANELS FOR FIRE TESTING