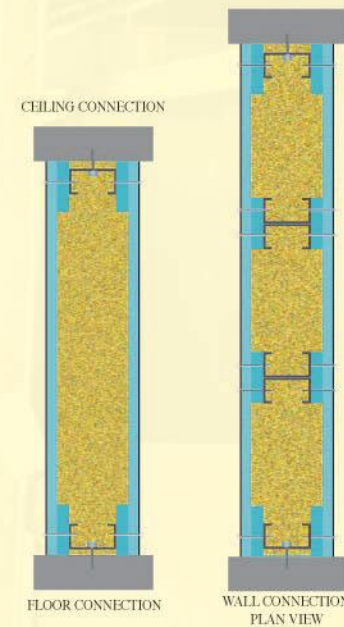


2 & 3 HOURS FIRE RESISTANCE NON-LOADBEARING PARTITION DRYWALL

9mm WINS MO Fire Protection Panel
2 & 3 hours fire rating, integrity and insulation in accordance with BS 476 : Part 22 : 1987

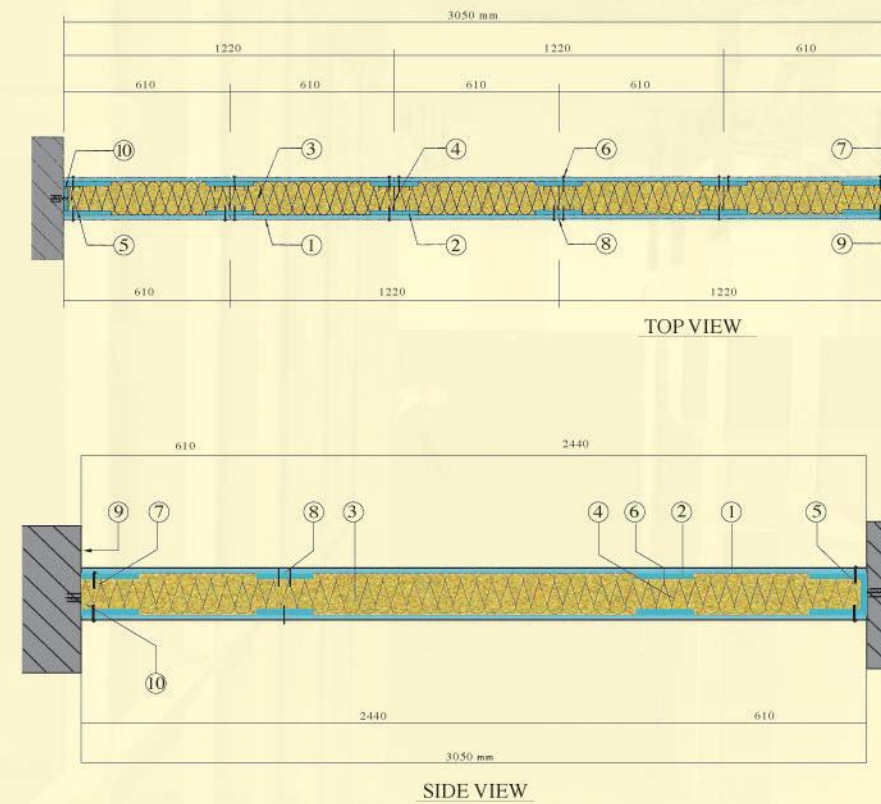
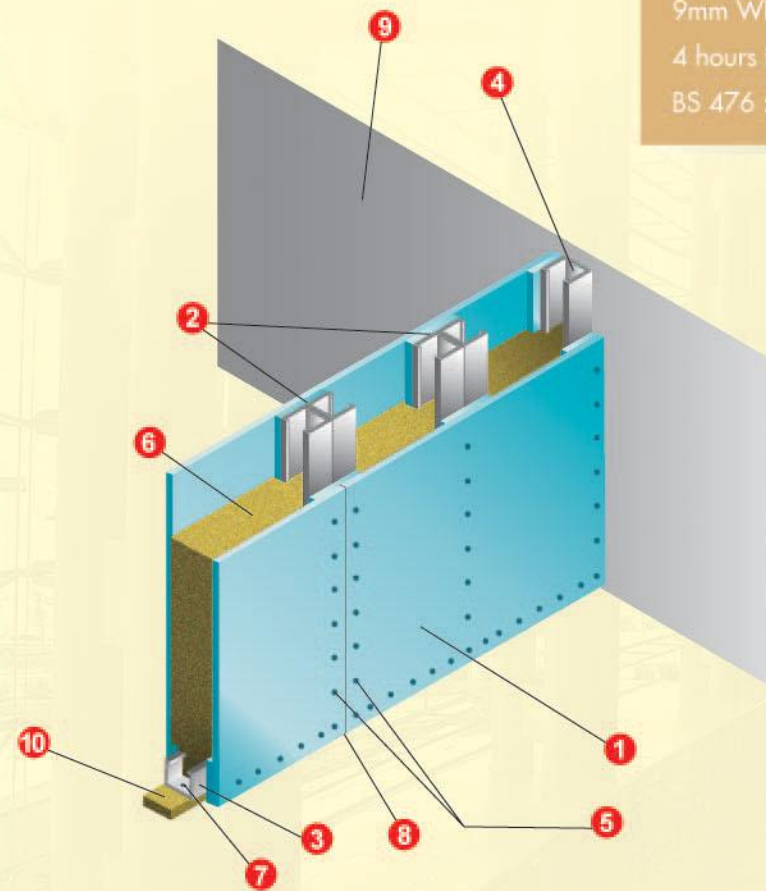
- 1 WINS boards, each side 9mm thick
- 2 9mm x 100mm WINS boards fillets
- 3 Ceiling and floor perimeter steel channel 50mm x 24mm x 0.5mm thick
- 4 Steel stud channel 50mm x 32mm x 0.5mm thick at 610mm spacing
- 5 M4 Self-tapping screws at 200mm centres
- 6 Rockwool density 80kg/m³ by 50mm thick
- 7 M6 Steel anchor bolt at 600mm centres
- 8 All Gaps sealed by intumescent mastic
- 9 Concrete
- 10 10mm Gap for expansion and filled with rock wool



4 HOURS FIRE RESISTANCE NON-LOADBEARING PARTITION DRYWALL

9mm WINS MO Fire Protection Panel
4 hours fire rating, integrity and insulation in accordance with BS 476 : Part 22 : 1987

- 3 Ceiling and floor perimeter steel channel 75mm x 24mm x 0.5mm thick
- 4 Steel stud channel 75mm x 32mm x 0.5mm thick at 610mm spacing
- 6 Rockwool density 80kg/m³ by 70mm thick

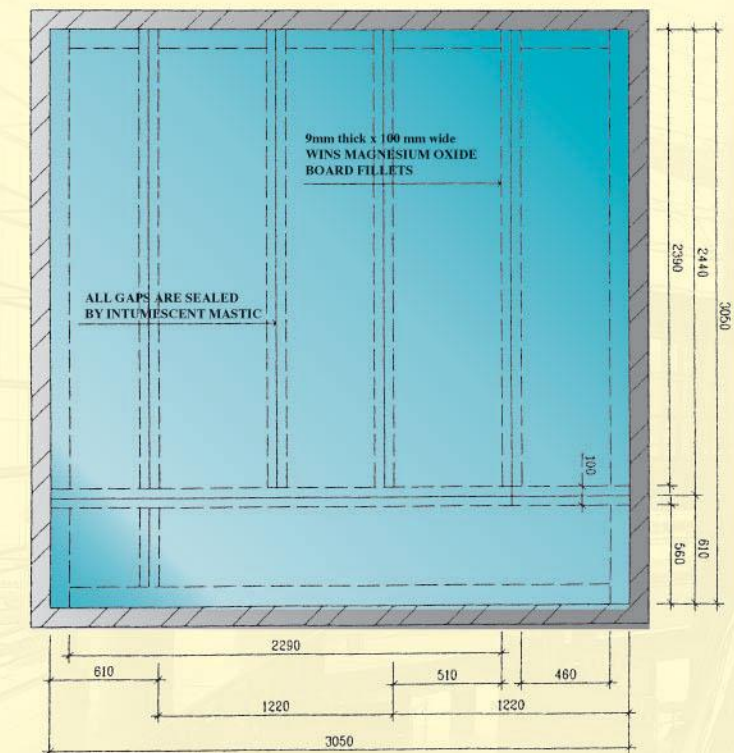


- LEGEND:
- 1 WINS MAGNESIUM OXIDE BOARD, 9MM THICK
 - 2 9MM X 100MM WINS MAGNESIUM OXIDE BOARD FILLETS
 - 3 ROCKWOOL DENSITY 80KG/M³ BY 50M M THICK
 - 4 STEEL STUD CHANNEL AT 610MM SPACING 32MM X 50MM X 0.5MM THICK
 - 5 CEILING & FLOOR PERIMETER STEEL CHANNEL 24MM X 50MM X 0.5MM THICK
 - 6 M4 SELF-TAPPING SCREWS AT 200MM CENTERS
 - 7 ANCHOR 600MM CENTERS
 - 8 ALL GAPS SEALED BY INTUMESCENT MASTIC
 - 9 CONCRETE FURNACE
 - 10 10MM GAP FOR EXPANSION AND FILLED WITH ROCKWOOL

9MM WINS MAGNESIUM OXIDE BOARD
4 HOURS FIRE RATING, INTEGRITY AND 3 HOURS INSULATION
IN ACCORDANCE WITH BS 476 : PART 22 : 1987

DENOTES

- 9mm THK MAGNESIUM OXIDE BOARD
- Concrete



9mm WINS MAGNESIUM OXIDE BOARD