



WINS CEMENT BOARD

WINS Cement Board is completely water proof and non-combustible. It is perfect for use with flooring, outdoor decorative walls, flame-retardant drywall partitions and lightweight wet side partitions for malls, hotels, office buildings, shops, restaurants, department stores etc.

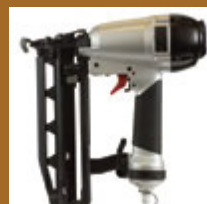


WINS Cement Board

- Waterproof
- Impact-resistant
(Test to BS 5234-2:1992)
- Fire-resistant
(Test to BS EN 1364-1:1999)
- Sound Proof (Up to STC 56, Test to ASTM E413-10)
- Easy to install



WINS Cement Board can be installed easily and quickly with the help of a saw or nails. You can also treat its broad surface with ceramic tiles or paint.



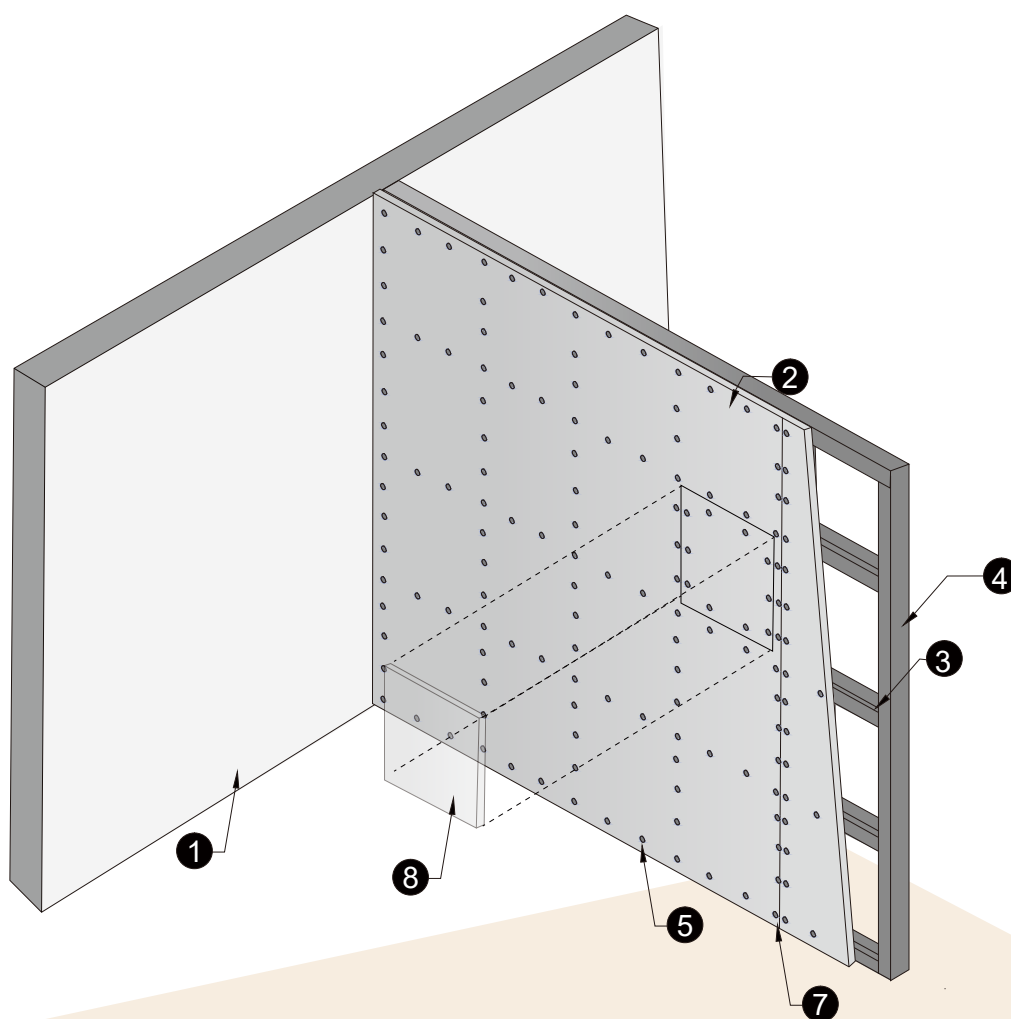
Mechanical and Physical Properties

Description	Standard	Test Result
Density	BS EN 12467:2004, Clause 7.3.1	1.298g/cm ³
Initial Surface Absorption (waterproofing)	BS 1881:Part 208:1996	Average: 0.006 ml/m ² /s
Water Absorption	BS EN 317:1993 and BS EN 312:2010	1.29%
pH Value	In-house method C-T-003	10.9
Anti Fungal	ASTM G 21-13	1 Grade
Asbestos Testing	EPA/600/R-93/116-1993 & in-house method G-T-028	Not detected
Determination of Dimension Changes Associated with Change in Relative Humidity	BS EN 318:2002	Average change in length: -0.17mm
		Average change in thickness: -0.69mm
Non-Combustibility	BS 476:Part 4:1970(AMD 2483 and 4390)	Non-Combustibility Material
Fire Propagation	BS 476:Part 6	Class 0
Surface Spread of Flame	BS 476:Part 7	Class 1
Moisture Content	BS EN 322:1992 and BS EN 312:2010	Average: 5.78%
Bending Strength	BS EN 12467:2012, Clause 7.3.2	Average MOR(ambient condition): 13.17MPa
		Average MOR(wet condition): 8.16MPa
Tensile Strength	BS 2782-10:Method 1003:1977	Average tensile strength: 4.59MPa
		Average elastic modulus: 6298MPa

WINS CEMENT BOARD

9 mm Non-Loadbearing Partition System

1-2 HOURS FIRE RESISTANCE RATING, INTEGRITY
IN ACCORDANCE WITH BS EN 1363-1:2020 AND BS EN 1364-1:2015



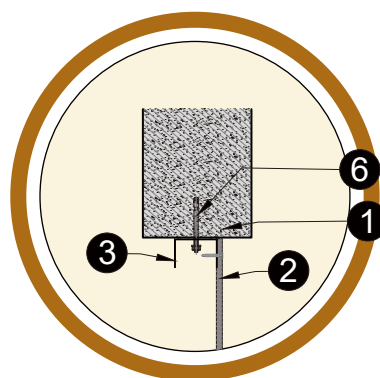
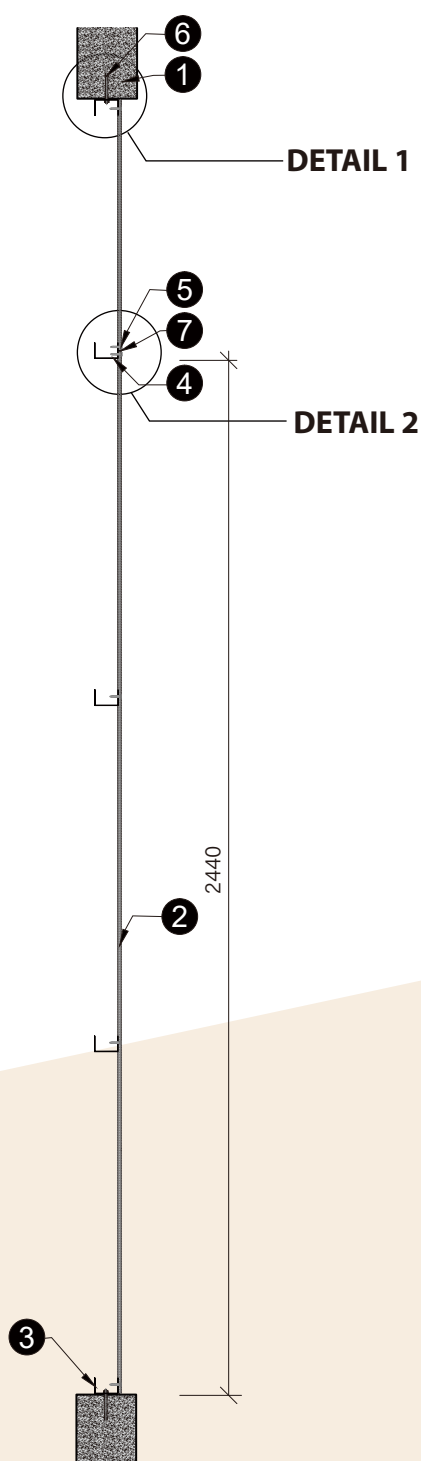
Technical Data:

- | | |
|---|---|
| 1 Wall | 5 M4 self-tapping screw,
@ 200mm C/C |
| 2 Wins cement board, 9mm thick 1 layer | 6 M6 anchor bolt,
@ 800mm C/C |
| 3 Steel track/channel,
32 x 50 x 32 x 0.5mm thick | 7 Board Joints, sealed with fire retardant sealant |
| 4 Steel stud (Vertical and Horizontal)
32 x 50 x 32 x 0.5mm thick @ 610mm by 813mm | 8 Access Panel |

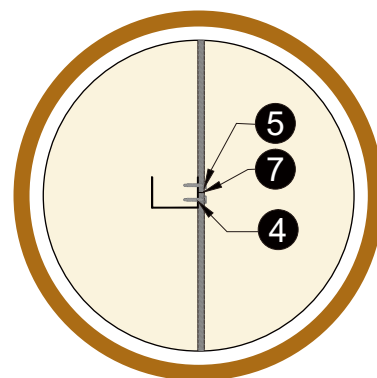
WINS CEMENT BOARD

9 mm Non-Loadbearing Partition System

1-2 HOURS FIRE RESISTANCE RATING, INTEGRITY
IN ACCORDANCE WITH BS EN 1363-1:2020 AND BS EN 1364-1:2015



DETAIL 1



DETAIL 2

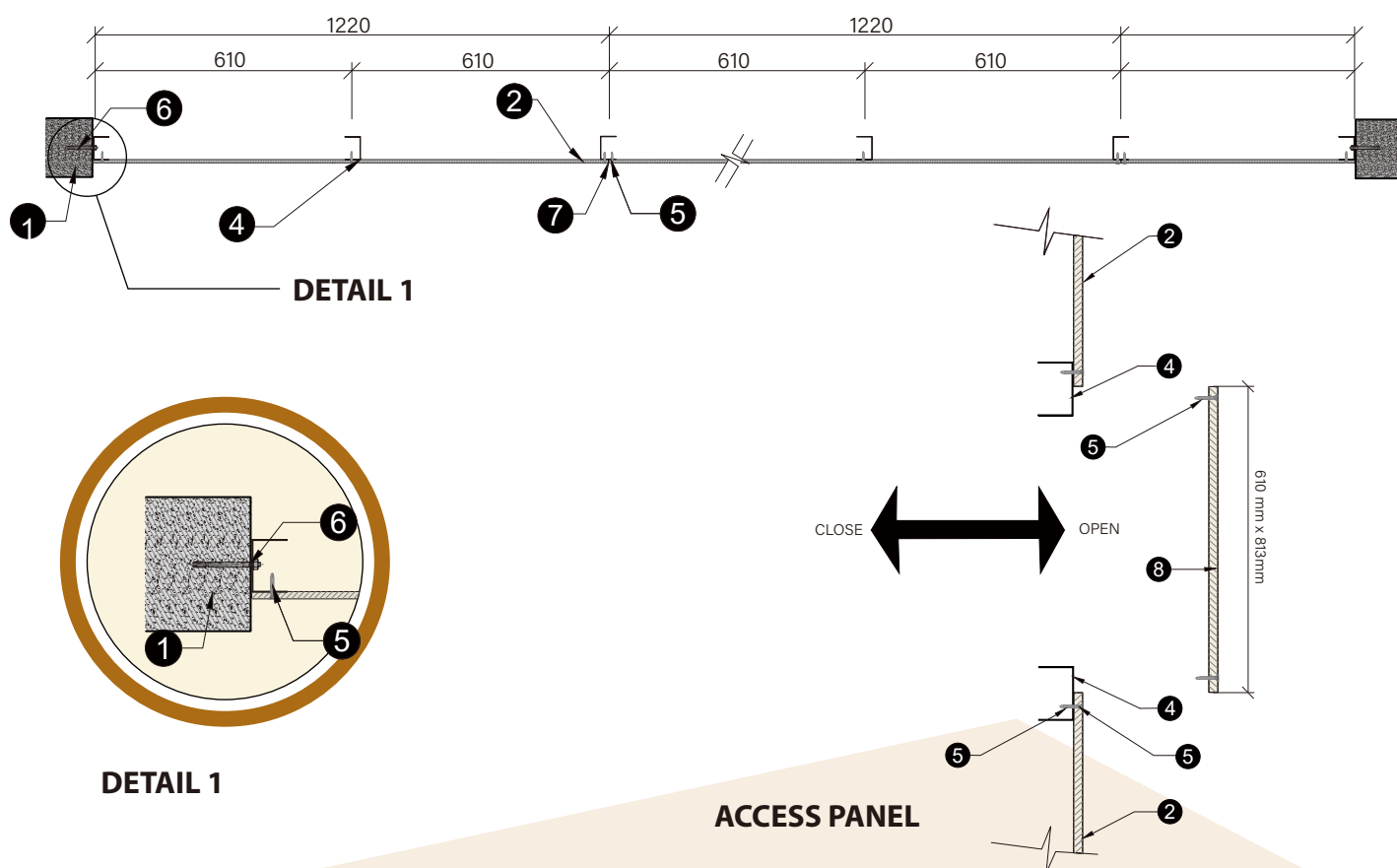
Technical Data:

- 1 Ceiling
- 2 Wins cement board, 9mm thick
- 3 Steel track/channel,
32 x 50 x 32 x 0.5mm thick
- 4 Steel stud (Vertical and Horizontal)
32 x 50 x 32 x 0.5mm thick @ 610mm by 813mm
- 5 M4 self-tapping screw,
@ 200mm C/C
- 6 M6 anchor bolt,
@ 800mm C/C
- 7 Board Joints, sealed with fire retardant sealant
- 8 Access Panel

WINS CEMENT BOARD

9 mm Non-Loadbearing Partition System

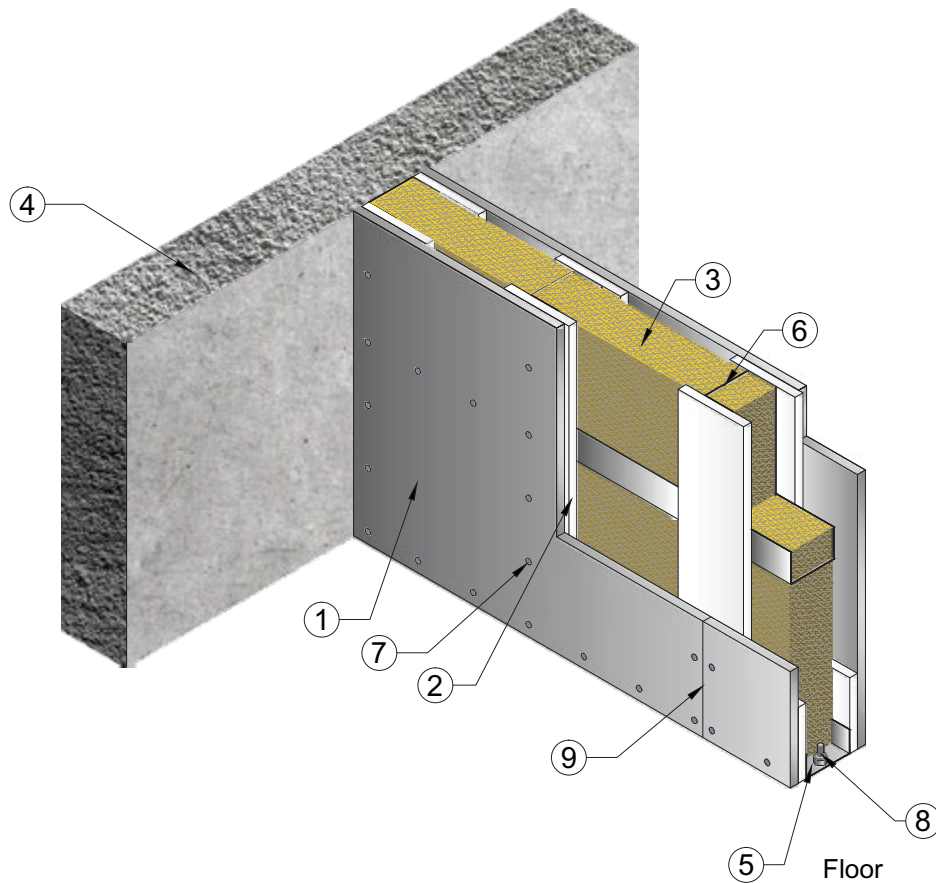
1-2 HOURS FIRE RESISTANCE RATING, INTEGRITY
IN ACCORDANCE WITH BS EN 1363-1:2020 AND BS EN 1364-1:2015



Technical Data:

- | | |
|--|---|
| 1 Wall | 5 M4 self-tapping screw,
@ 200mm C/C |
| 2 Wins cement board, 9mm thick | 6 M6 anchor bolt,
@ 800mm C/C |
| 3 Steel track/channel,
32 x 50 x 32 x 0.5mm thick | 7 Board Joints, sealed with fire retardant sealant |
| 4 Steel stud (Vertical and Horizontal)
32 x 50 x 32 x 0.5mm thick @ 610mm by 813mm | 8 Access Panel |

9MM WINS CEMENT BOARD 2 HOURS FIRE RESISTANCE RATING, INTEGRITY AND INSULATION NON-LOADBEARING PARTITION IN ACCORDANCE WITH BS EN 1364-1:1999



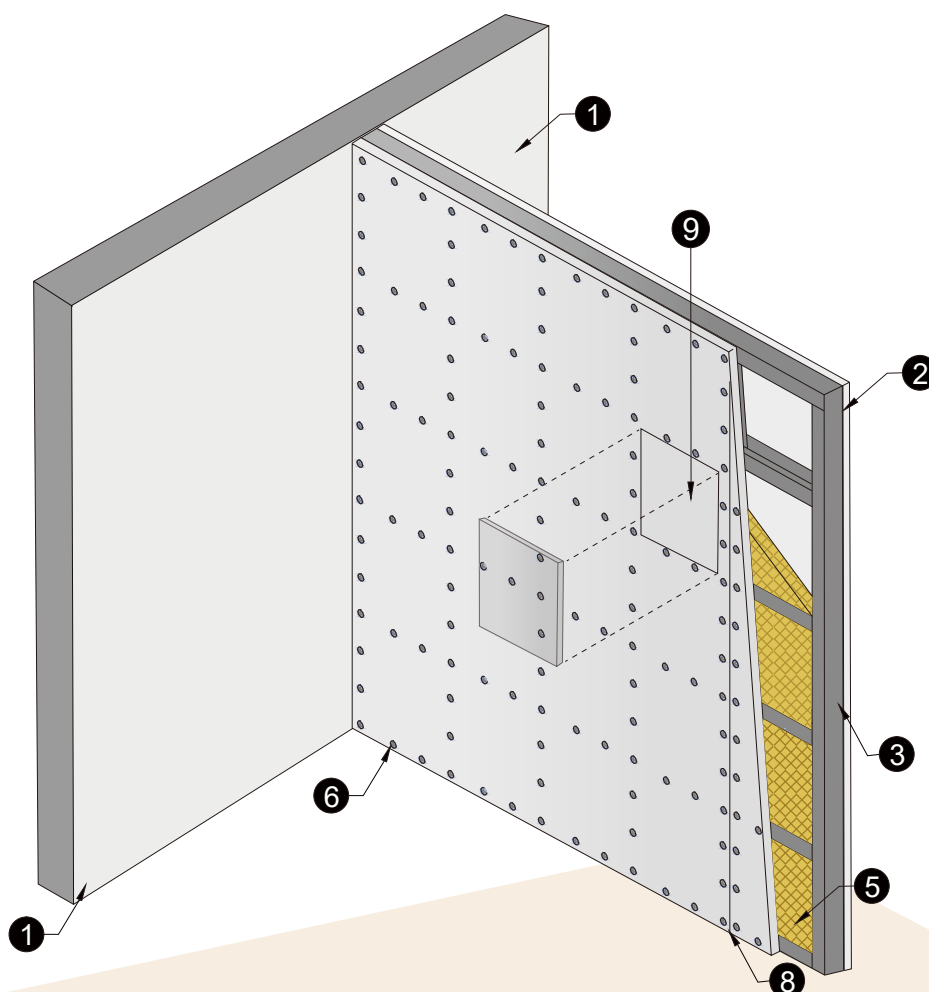
Technical Data:

- 1 WINS CEMENT BOARD, 9MM THICK
- 2 WINS MO9 FIRE PROTECTION BOARD FILLET 9MM THICK, 100MM WIDE
- 3 ROCK WOOL, 80KG/M3, 50MM THICK
- 4 WALL
- 5 CEILING FLOOR PERIMETER STEEL CHANNEL 24X50X24X0.5MM
- 6 VERTICAL STEEL STUD 32X50X32X0.5MM, @610MM C/C
- 7 M4 SELF-TAPPING SCREW, @200MM C/C
- 8 M8 ANCHOR BOLT, @800MM C/C
- 9 BOARD JOINT, SEALED WITH FIRE RETARDANT SEALANT

WINS CEMENT BOARD

12 mm Non-Loadbearing Partition System

**1&2 HOURS FIRE RESISTANCE RATING, INTEGRITY AND INSULATION
IN ACCORDANCE WITH BS EN 1363-1:2020 AND BS EN 1364-1:2015**



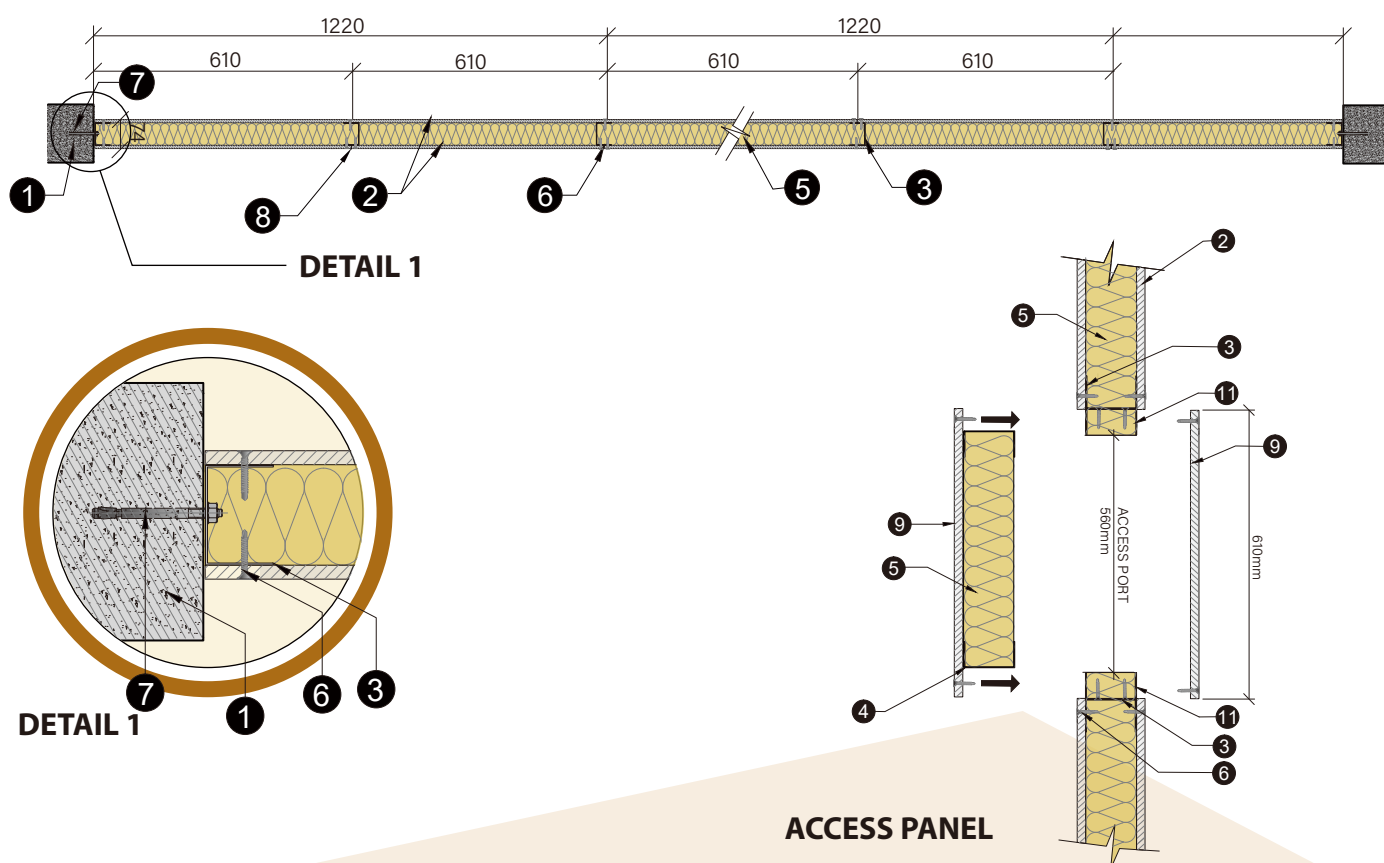
Technical Data:

- | | |
|---|--|
| 1 Wall | 6 M4 self-tapping screw,
@ 200mm C/C |
| 2 Wins cement board, 12mm thick,
one layer each side | 7 M6 anchor bolt,
@ 800mm C/C |
| 3 Steel track/channel, Vertical and Horizontal steel stud
32 x 50 x 32 x 0.5mm thick @ 610mm | 8 Board Joints, sealed with fire retardant sealant |
| 4 Top & Bottom runners,
steel stud 32 x 50 x 32 x 0.5mm thick | 9 Access Panel |
| 5 Rockwool 50mm thick, 80 kg/m ³ for 1 hr insulation
50mm thick, 100kg/m ³ for 2 hrs insulation | 10 Steel stud, (Access panel opening)
25 x 50 x 25 x 0.5mm thick |

WINS CEMENT BOARD

12 mm Non-Loadbearing Partition System

**1&2 HOURS FIRE RESISTANCE RATING, INTEGRITY AND INSULATION
IN ACCORDANCE WITH BS EN 1363-1:2020 AND BS EN 1364-1:2015**



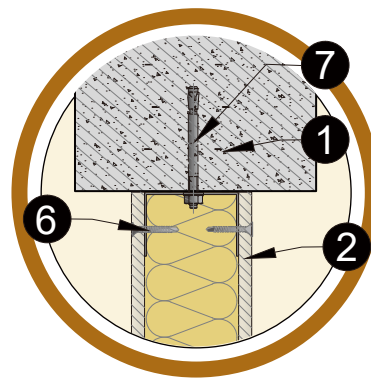
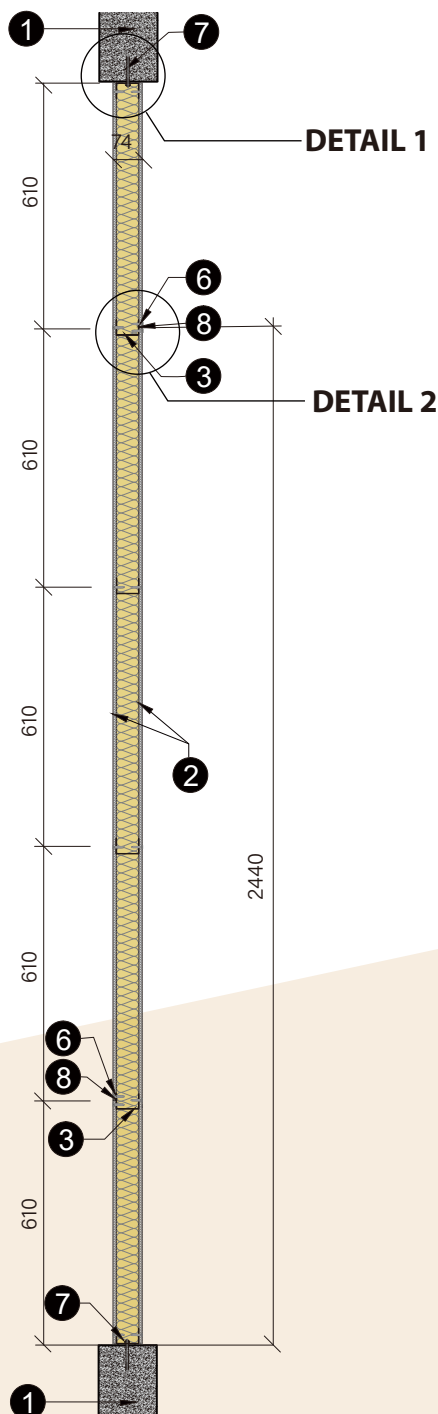
Technical Data:

- | | |
|---|--|
| 1 Wall | 6 M4 self-tapping screw,
@ 200mm C/C |
| 2 Wins cement board, 12mm thick,
one layer each side | 7 M6 anchor bolt,
@ 800mm C/C |
| 3 Steel track/channel, Vertical and Horizontal steel stud
32 x 50 x 32 x 0.5mm thick @ 610mm | 8 Board Joints, sealed with fire retardant sealant |
| 4 Top & Bottom runners,
steel stud 32 x 50 x 32 x 0.5mm thick | 9 Access Panel |
| 5 Rockwool 50mm thick, 80 kg/m ³ for 1 hr insulation
50mm thick, 100kg/m ³ for 2 hrs insulation | 10 Steel stud, (Access panel opening)
25 x 50 x 25 x 0.5mm thick |

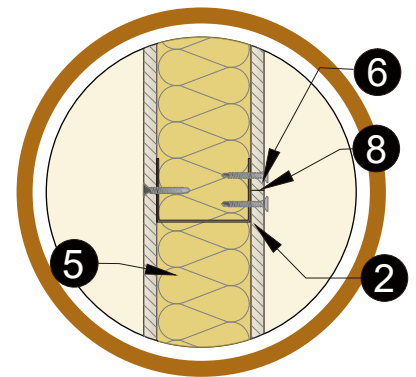
WINS CEMENT BOARD

12 mm Non-Loadbearing Partition System

**1&2 HOURS FIRE RESISTANCE RATING, INTEGRITY AND INSULATION
IN ACCORDANCE WITH BS EN 1363-1:2020 AND BS EN 1364-1:2015**



DETAIL 1



DETAIL 2

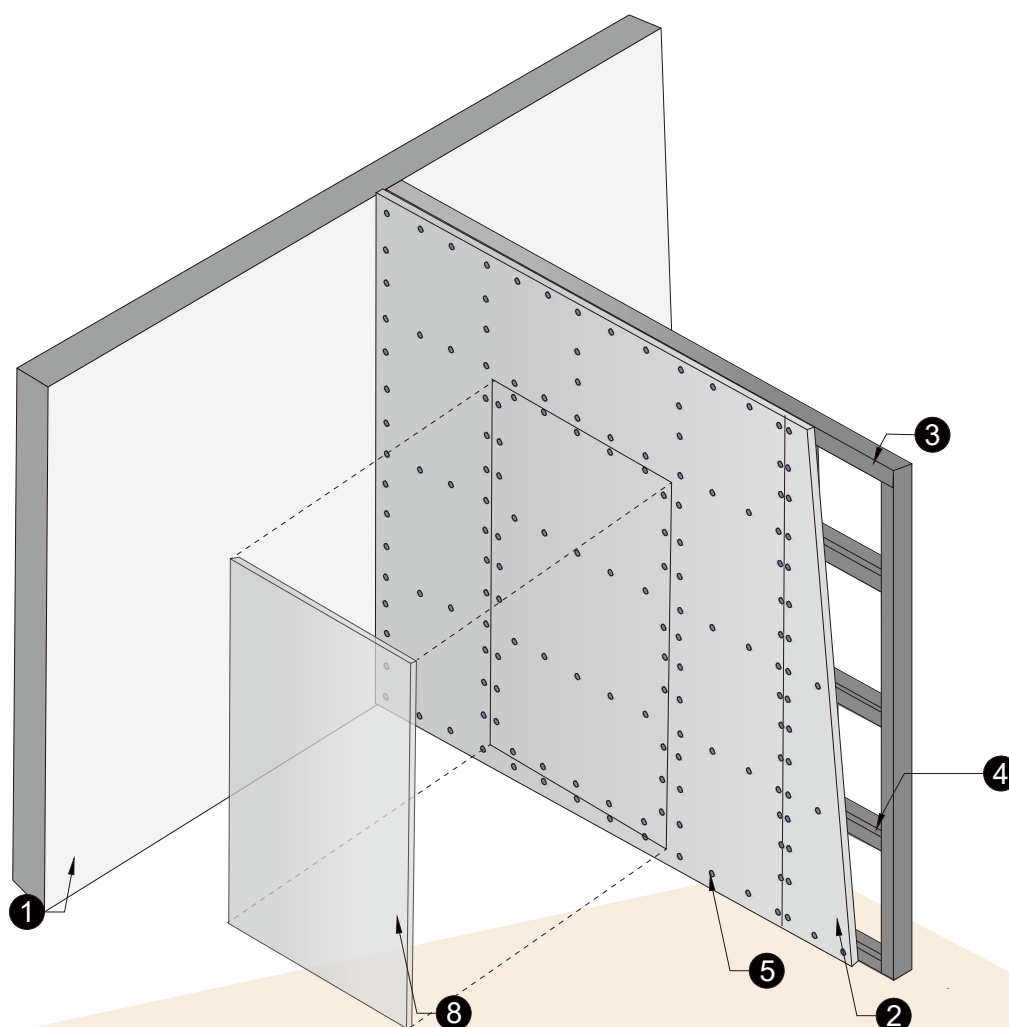
Technical Data:

- 1** Wall
- 2** Wins cement board, 12mm thick, one layer each side
- 3** Steel track/channel, Vertical and Horizontal steel stud 32 x 50 x 32 x 0.5mm thick @ 610mm
- 4** Top & Bottom runners, steel stud 32 x 50 x 32 x 0.5mm thick
- 5** Rockwool 50mm thick, 80 kg/m³ for 1 hr insulation
50mm thick, 100kg/m³ for 2 hrs insulation
- 6** M4 self-tapping screw, @ 200mm C/C
- 7** M6 anchor bolt, @ 800mm C/C
- 8** Board Joints, sealed with fire retardant sealant
- 9** Access Panel
- 10** Steel stud, (Access panel opening) 25 x 50 x 25 x 0.5mm thick

WINS CEMENT BOARD

12 mm Non-Loadbearing Partition System

1-2 HOURS FIRE RESISTANCE RATING, INTEGRITY
IN ACCORDANCE WITH BS EN 1363-1:2020 AND BS EN 1364-1:2015



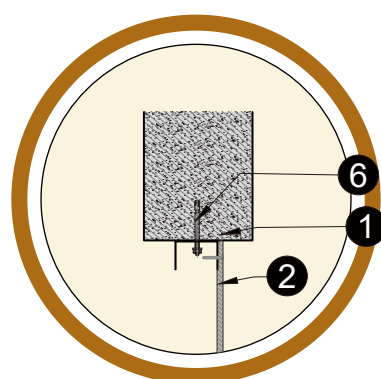
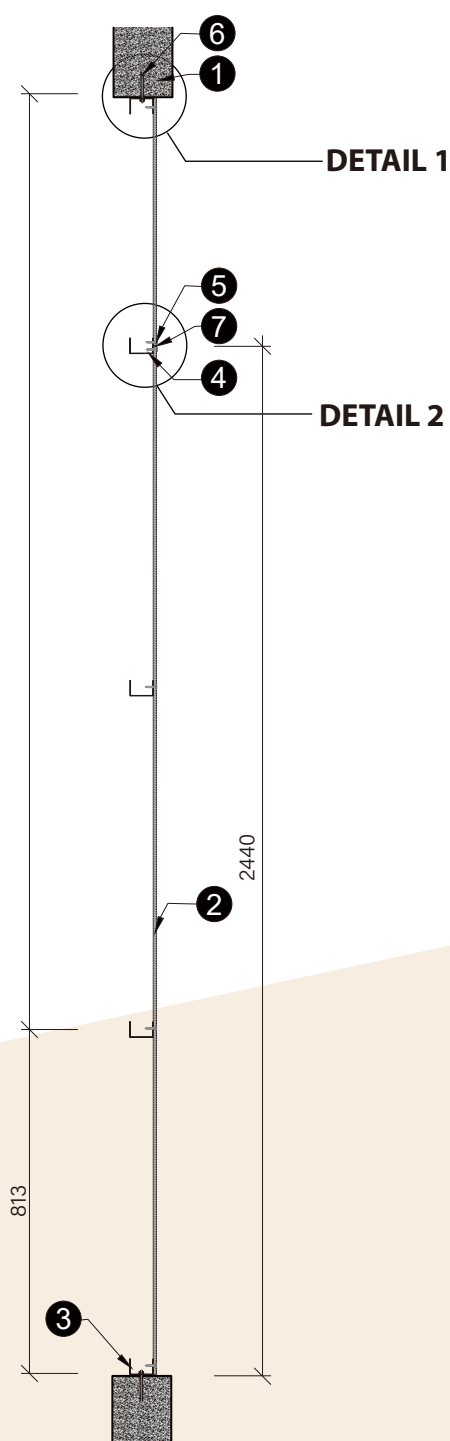
Technical Data:

- | | |
|--|---|
| 1 Wall | 6 M6 anchor bolt,
@ 800mm C/C |
| 2 Wins cement board, 12mm thick X 1 Llayer | 7 Board Joints, sealed with fire retardant sealant |
| 3 Steel track/channel,
32 x 50 x 32 x 0.5mm thick | 8 Access Panel (optional) |
| 4 Steel stud (Vertical and Horizontal)
32 x 50 x 32 x 0.5mm thick @ 610mm by 813mm | |
| 5 M4 self-tapping screw,
@ 200mm C/C | |

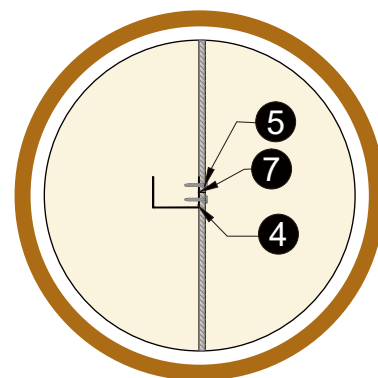
WINS CEMENT BOARD

12 mm Non-Loadbearing Partition System

1-2 HOURS FIRE RESISTANCE RATING, INTEGRITY
IN ACCORDANCE WITH BS EN 1363-1:2020 AND BS EN 1364-1:2015



DETAIL 1



DETAIL 2

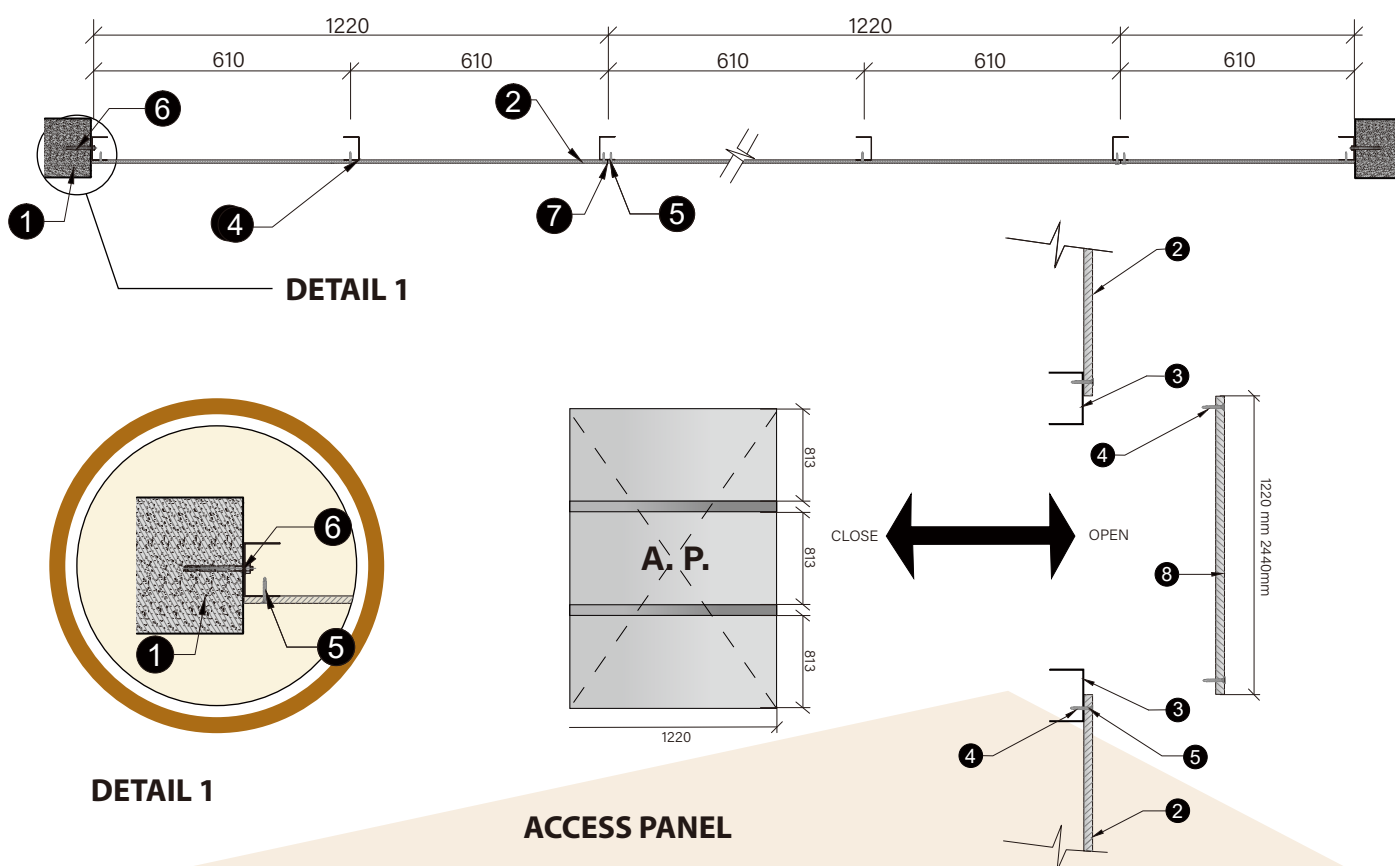
Technical Data:

- 1 Ceiling
- 2 Wins cement board, 12mm thick
- 3 Steel track/channel,
32 x 50 x 32 x 0.5mm thick
- 4 Steel stud (Vertical and Horizontal)
32 x 50 x 32 x 0.5mm thick @ 610mm by 813mm
- 5 M4 self-tapping screw,
@ 200mm C/C
- 6 M6 anchor bolt,
@ 800mm C/C
- 7 Board Joints, sealed with fire retardant sealant
- 8 Access Panel (optional)

WINS CEMENT BOARD

12 mm Non-Loadbearing Partition System

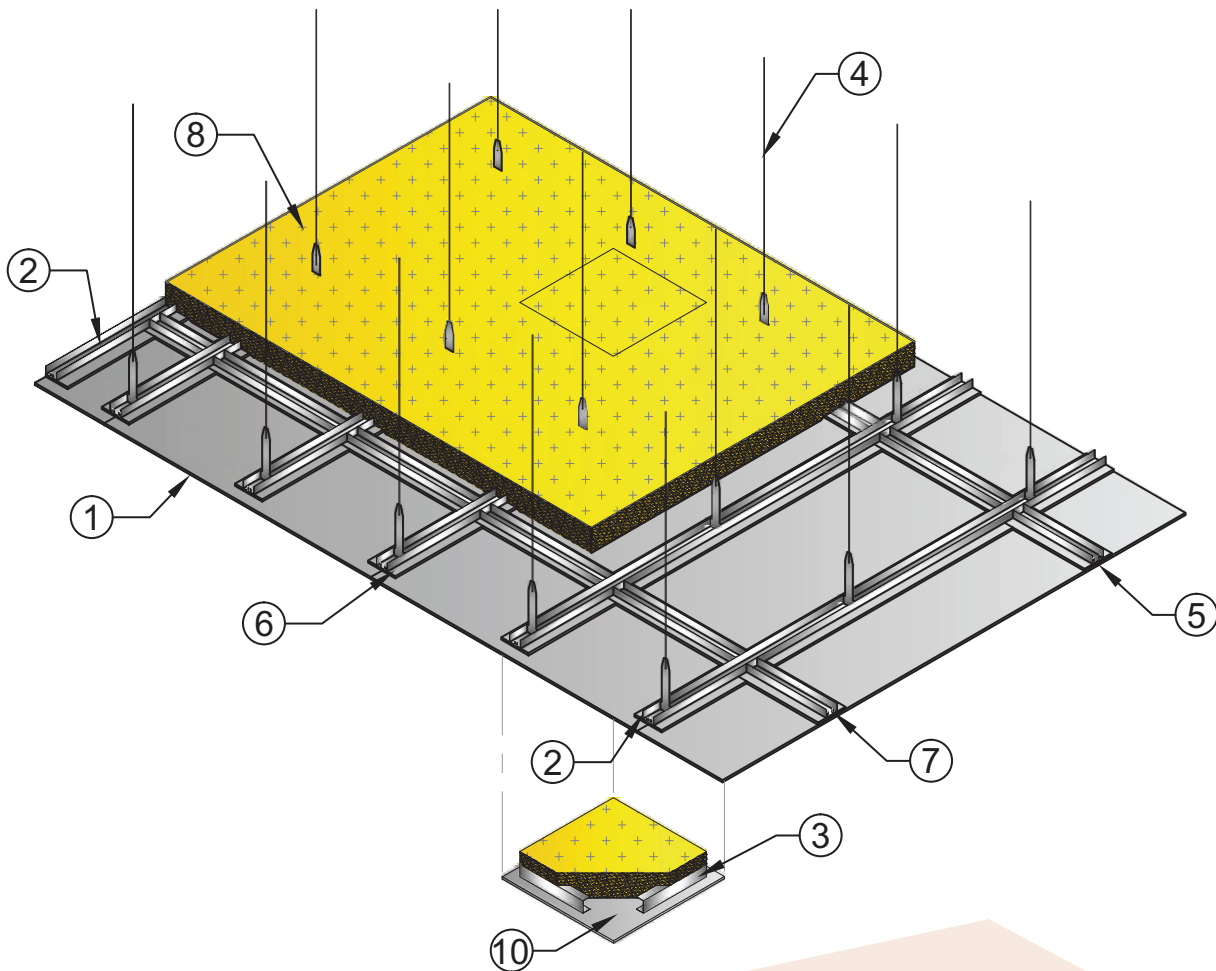
1-2 HOURS FIRE RESISTANCE RATING, INTEGRITY
IN ACCORDANCE WITH BS EN 1363-1:2020 AND BS EN 1364-1:2015



Technical Data:

- | | |
|--|---|
| 1 Wall | 6 M6 anchor bolt,
@ 800mm C/C |
| 2 Wins cement board, 12mm thick | 7 Board Joints, sealed with fire retardant sealant |
| 3 Steel track/channel,
32 x 50 x 32 x 0.5mm thick | 8 Access Panel (optional) |
| 4 Steel stud (Vertical and Horizontal)
32 x 50 x 32 x 0.5mm thick @ 610mm by 813mm | |
| 5 M4 self-tapping screw,
@ 200mm C/C | |

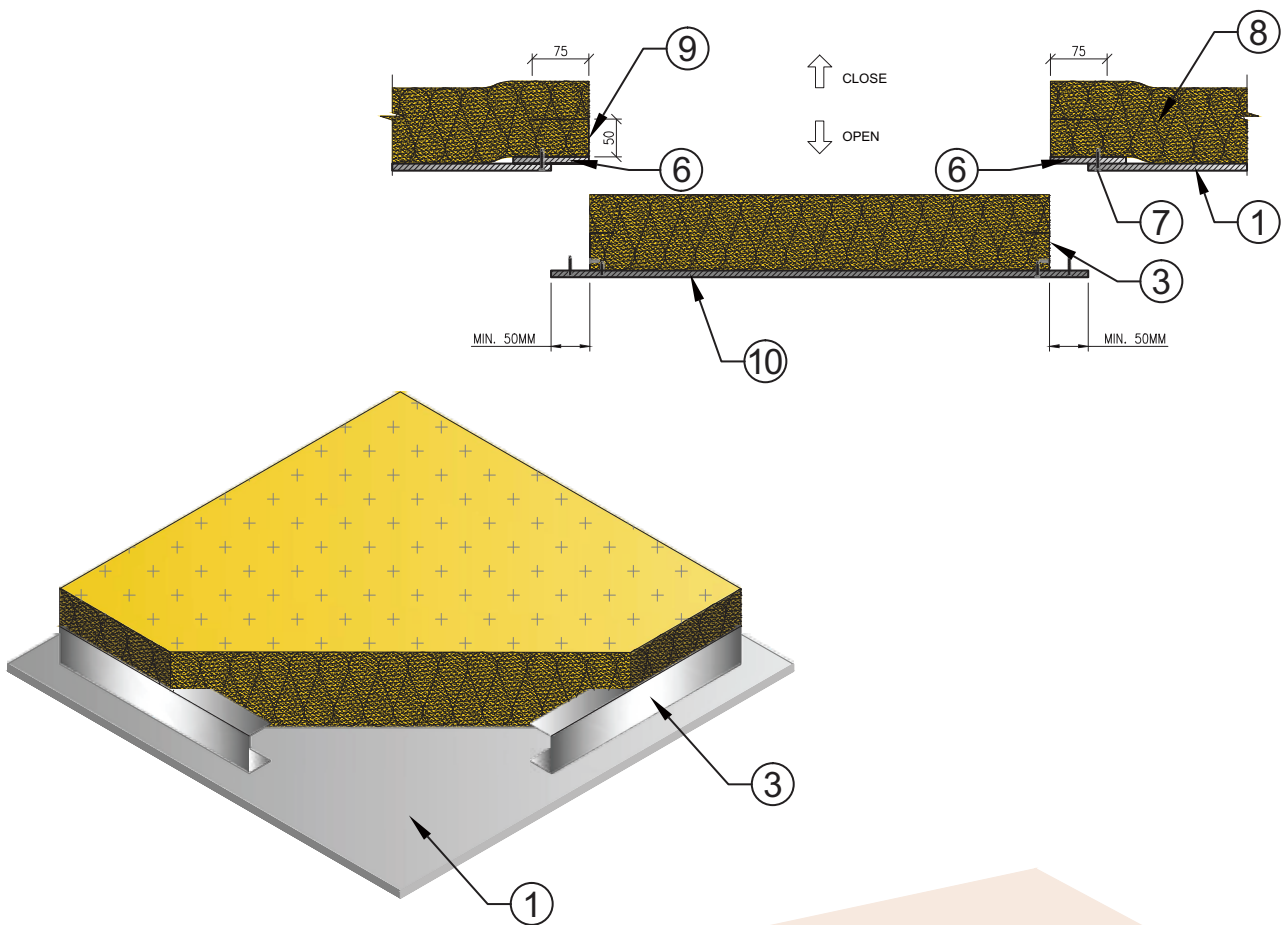
9MM WINS CEMENT BOARD 1 HOUR FIRE RESISTANCE RATING, INTEGRITY AND INSULATION NON-LOADBEARING CEILING WITH ACCESS PANEL IN ACCORDANCE WITH BS EN 1364-2:1999



Technical Data:

- 1 WINS CEMENT BOARD, 9MM THICK
- 2 STEEL C-CHANNEL AT 610MM SPACING, 32x50x32x0.5MM THICK
- 3 FURRING CHANNEL / PERIMETER C-CHANNEL, 25x50x25x0.5MM THICK
- 4 STEEL WIRE HANGER, @1000MM C/C
- 5 BOARD JOINTS, ALL GAPS SEALED WITH FIRE RETARDANT SEALANT
- 6 WINS CEMENT BOARD FILLET, 100MM WIDTH, 9MM THICK
- 7 SELF-TAPPING SCREWS AT NOMINAL 200MM CENTRES
- 8 ROCK WOOL-ONE LAYER OF 100MM THICK (80KG/M³)
- 9 CEILING OPENING, STIFFENER GALVANISED STEEL C-CHANNEL, 75x50x75x0.5MM THICK
- 10 ACCESS PANEL (OPTIONAL, ANY BOARD SURFACE)

9MM WINS CEMENT BOARD 1 HOUR FIRE RESISTANCE RATING, INTEGRITY AND INSULATION NON-LOADBEARING CEILING WITH ACCESS PANEL IN ACCORDANCE WITH BS EN 1364-2:1999

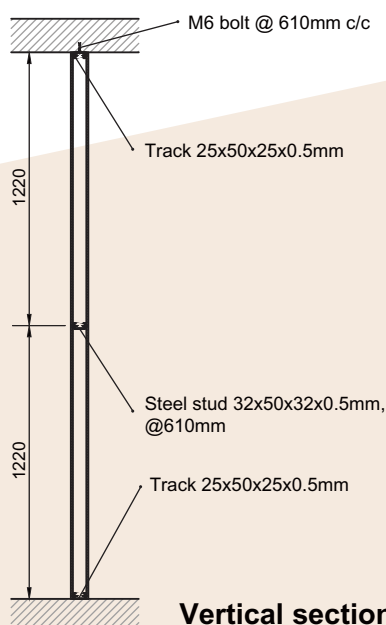


Technical Data:

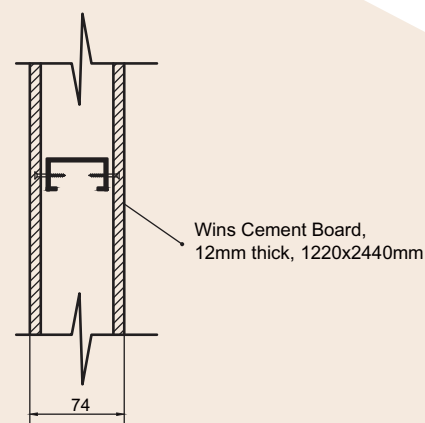
- 1 WINS CEMENT BOARD, 9MM THICK
- 2 STEEL C-CHANNEL AT 610MM SPACING, 32x50x32x0.5MM THICK
- 3 FURRING CHANNEL / PERIMETER C-CHANNEL, 25x50x25x0.5MM THICK
- 4 STEEL WIRE HANGER, @1000MM C/C
- 5 BOARD JOINTS, ALL GAPS SEALED WITH FIRE RETARDANT SEALANT
- 6 WINS CEMENT BOARD FILLET, 100MM WIDTH, 9MM THICK
- 7 SELF-TAPPING SCREWS AT NOMINAL 200MM CENTRES
- 8 ROCK WOOL-ONE LAYER OF 100MM THICK (80KG/M³)
- 9 CEILING OPENING, STIFFENER GALVANISED STEEL C-CHANNEL, 75x50x75x0.5MM THICK
- 10 ACCESS PANEL (OPTIONAL, ANY BOARD SURFACE)

12mm WINS Cement Board Test to BS 5234 : Part 2: 1992 HD(Heavy Duty) Impact Resistance Partition System(74mm thick)

Requirements tested	Grade performance achieved Pass/Fail			
	LD	MD	HD	SD
Stiffness	-	-	Passed	-
Surface damage by small hard body impact:				
Straight partition	-	-	Passed	-
Right angle partition	-	-	Passed	-
Surface damage by large soft body impact:				
Straight partition	-	-	Passed	-
Right angle partition	-	-	Passed	-
Perforation by small hard body impact:				
Straight partition	-	-	Passed	-
Right angle partition	-	-	Passed	-
Resistance to structural damage by large soft body impact	-	-	Passed	-
Door slamming	-	-	Passed	-
Light weight anchorage – Pull-out	-	-	Passed	-
Light weight anchorage – Pull-down	-	-	Passed	-
Crowd pressure	1.5 kN/M			
Heavy weight anchorage – (Wash basin)	1250 N			
Heavy weight anchorage – (Wall cupboard)	4000 N			

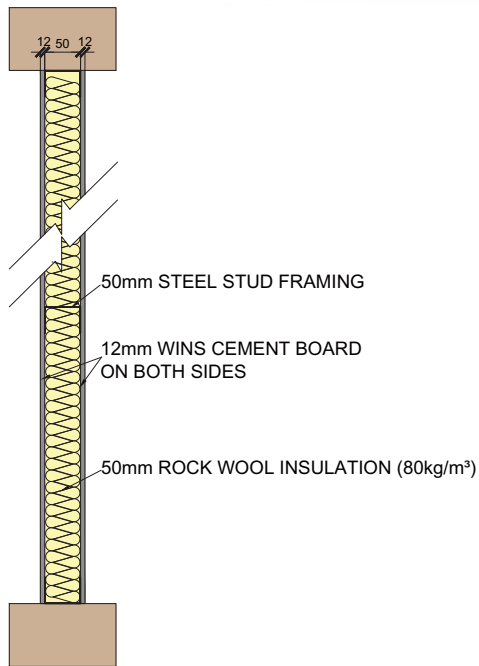


Vertical section



Overall Thickness

ACOUSTIC PERFORMANCE FOR 74mm DRYWALL SYSTEM OF 12mm WINS CEMENT BOARD



DETAIL OF CONSTRUCTION



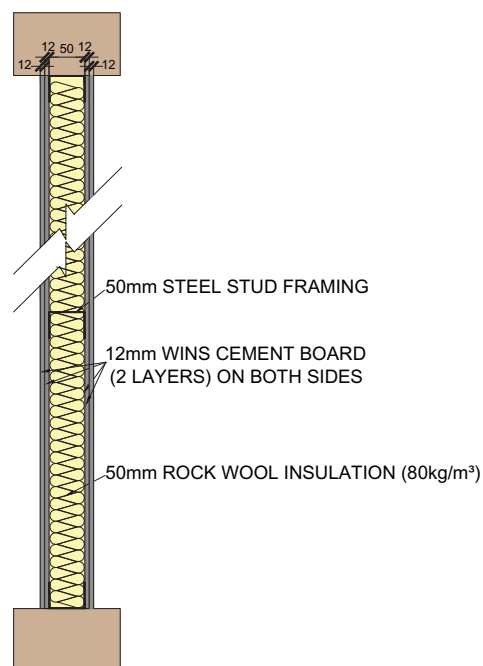
Standard

ISO 717-1:1997

Weighted Apparent Sound Reduction Index $R'w$, dB

48

ACOUSTIC PERFORMANCE FOR 98mm DRYWALL SYSTEM OF 12mm WINS CEMENT BOARD



DETAIL OF CONSTRUCTION



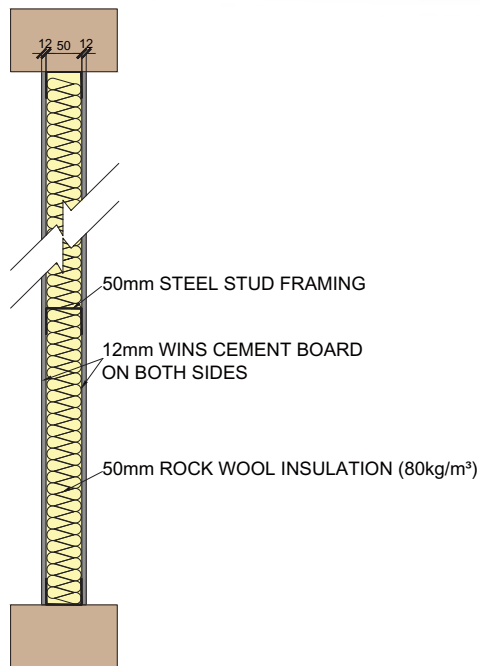
Standard

ISO 717-1:1997

Weighted Apparent Sound Reduction Index $R'w$, dB

55

ACOUSTIC PERFORMANCE FOR 74mm DRYWALL SYSTEM OF 12mm WINS CEMENT BOARD



DETAIL OF CONSTRUCTION



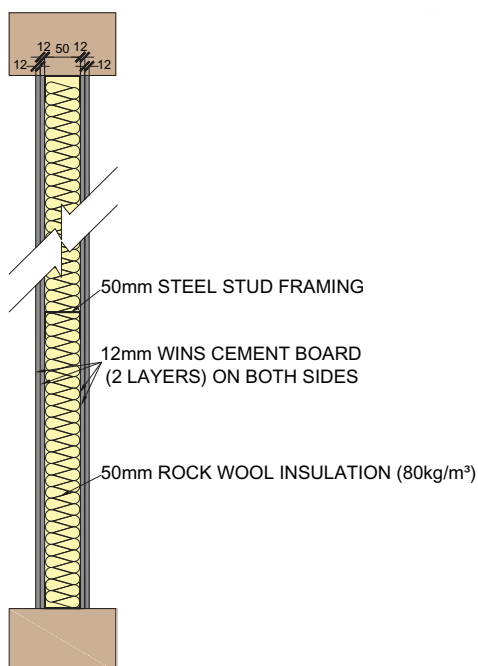
Standard

ASTM E413-10

Sound Transmission Class, STC

STC 45

ACOUSTIC PERFORMANCE FOR 98mm DRYWALL SYSTEM OF 12mm WINS CEMENT BOARD



DETAIL OF CONSTRUCTION



Standard

ASTM E413-10

Sound Transmission Class, STC

STC 56



Website : www.winsconsultants.com